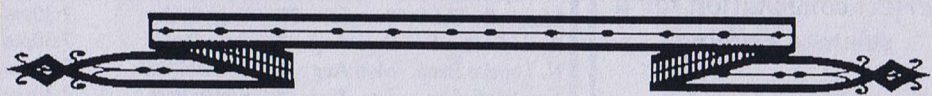


Concert No. 4
July 6, 1997

MARSHALL'S CIVIC BAND

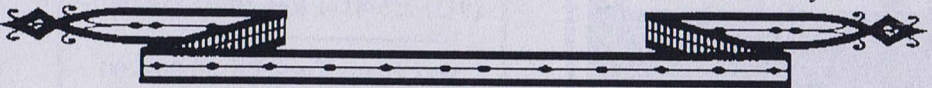
Established 1884



Star Spangled Banner	Key
Independia March	Hall
This is My Country	Jacobs & Raye
The Symphonic Gershwin	arr. Barker
Places U.S.A.	arr. Bullock
With Quiet Courage	Daehn
George Washington Bicentennial March	Sousa
(the children's march)	
The Blue and the Gray	Grundman

INTERMISSION

Vaquero	Nestico
The Wizard of Oz Fantasy	Harburg & Arlen
T.D.'s Boogie Woogie	Dorsey & Kincaide
Le Regiment de Sambre et Meuse	Rausky
An Irish Rhapsody	Grundman
"Emporia" Galop	King
Battle Hymn of the Republic	arr. Wilhousky/Neilson



Our next concert will be Sunday July 27th at 7:30pm in Gage Park.
See schedule of remaining concerts on the back.

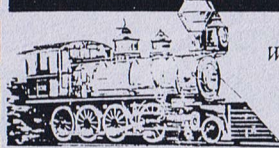


Drum and Guitar

3416 SW 6th in Topeka
(913) 235-3876

Clip this coupon and receive 10% off
your next purchase (expires 8/31/97)

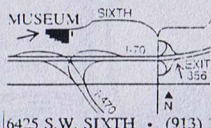
Kansas Museum of History



*Exhibit Galleries
Workshops and Folklife
Demonstrations
Tours*

ADMISSION IS FREE

An adventure awaits you



*A unique
selection of
Kansas gifts
and products*



6425 S.W. SIXTH • (913) 372-8681

New summer hours: 9:00-9:00 Thursdays

Clip this coupon and receive 10% off your
next purchase (expires 8/31/97)

**Marshall's Band plus the
tasty food and drinks at
the concession stand - a
perfect combination for a
summer evening.**

**And the band doesn't
mind if you get your
refreshments during the
music!**

Lloyd Woodburn

REMAINING SUMMER CONCERTS

Santa Fe Band	Sun	Jul	13	Gage Park	7:30pm
Jazz Workshop	Sun	Jul	20	Gage Park	7:30pm
N. Topeka Band	Mon	Jul	21	Garfield Park	7:30pm
Marshall's Band	Sun	Jul	27	Gage Park	7:30pm
Santa Fe Band	Sun	Aug	3	Gage Park	7:30pm
N. Topeka Band	Mon	Aug	4	Garfield Park	7:30pm
Jazz Workshop	Tue	Aug	5	Ripley Park	7:30pm
Marshall's Band	Sat	Aug	9	Gage Park Train	5:00pm
Marshall's Band	Sun	Aug	10	Gage Park	7:30pm

In other upcoming events, the Kansas State Historical Society will be sponsoring a Museum exhibit on the history of bands in Kansas which will run January through December of 1998. The exhibit, titled **They're Playing Our Song, A History of Community Bands in Kansas**, will be free and open to the public.

If you enjoy the free summer concert series, please contact the Parks and Recreation department or the Mayor's office and let them know.

EMDE MUSIC SHOP

Musical Instrument Repair & Sales

Ken Emde - Owner

1800 Kansas Ave., Topeka, KS 66612
(913) 235-8171 Res. (913) 748-0910

Store Hours Tues.-Fri. 10:00-6:00
Sat. 9:00-1:00

**Quality
Band & Orchestra
Instruments
• Guitars • Amps
• Music • Lessons
• Accessories • Repairs
• Rental • Sales**

**MANNING
MUSIC**

1907 SW GAGE
272-1740